



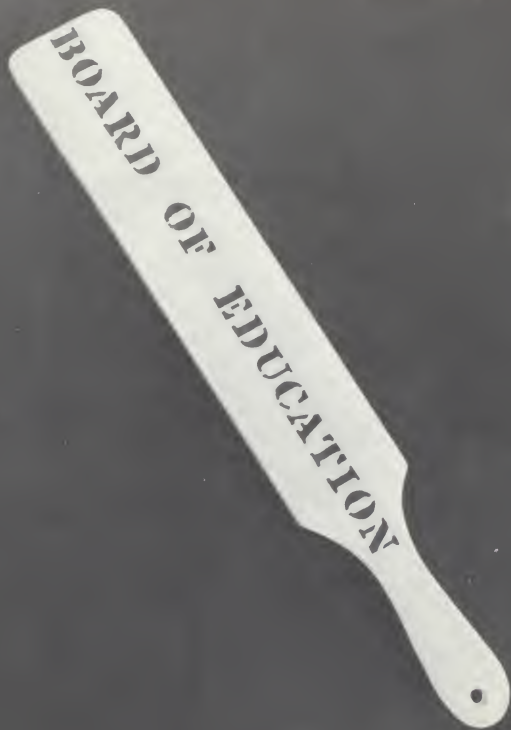
*Lowellian*  
1958







faculty





FRANK E. DICK  
PRINCIPAL



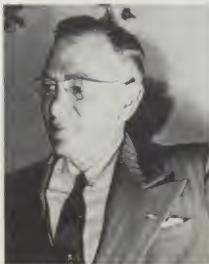
THOMAS STUART  
ASSISTANT PRINCIPAL



GRACE WOODRIDGE  
SECRETARY



RAYMOND M. FORBURGER  
TRUSTEE



WILFRED R. WEAVER  
TRUSTEE



WILLIAM E. PURCELL  
COUNTY SUPERINTENDENT



JOHN BAKER  
BIOLOGY



MARY FRANCES BAUGHMAN  
MATHEMATICS



C. EDWARD CHAPMAN  
GOVERNMENT



WENDELL W. FREDERICK  
VOCAL MUSIC



JOSEPH W. FRISZ  
ALGEBRA



GEORGE E. HAM  
TYPEWRITING



GLADYS L. HETHERINGTON  
ENGLISH



W. THEODORE JONES  
INSTRUMENTAL MUSIC



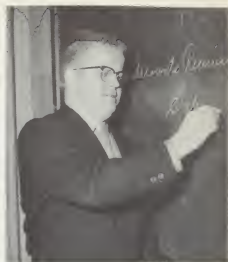
KENNETH D. KLEIN  
SAFETY



JAMES LITTLE  
GRICULTURE & CHEMISTRY



WILLIAM MARTIN  
DRAMATICS



ROBERT MILLER  
BOOKKEEPING



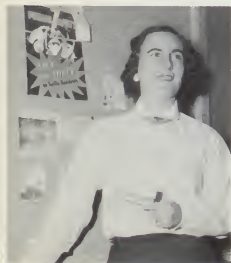
DAN MOLCHAN  
PHYSICAL EDUCATION



VILAS MORETZ  
BIOLOGY



HAZEL NICHOLS  
ENGLISH



GLORIA PRYSOCK  
PHYSICAL EDUCATION



ROBERT RAY  
ART



PAUL SCHUYLER  
INDUSTRIAL ARTS





MARY SISSON  
U. S. HISTORY



WILMA SMITH  
HOME ECONOMICS



CHARLES STOKES  
PHYSICS



GERALDINE THOMPSON  
LIBRARIAN



ARLENE VANDERMARK  
HOME ECONOMICS



MARY WILCOX  
SHORTHAND



Mrs. Hutton



Mr. Sutton, and Mr. Nelson





SENIORS



President--Jim Tully



Vice-President--Jerry Alyea



Secretary-Treasurer--Pat O'Connell

#### SPONSORS



Seated, left to right: Miss Baughman, Mr. Ray, Mr. Martin, Mr. Little, Mr. Chapman, and Mrs. Smith.

DON ADAM

Football Major 2, Basketball Major 3, Baseball Major 4, Team Manager 4, Senior Play Crew 1, Junior Play Cast 1, Junior Play Crew 1, L. Club 2, Officer 1, All School Show 4.



GLEN ALLEN

Track Minor 2, Cross Country Major 1, Cross Country Minor 2, Wrestling Minor 1, Senior Play Cast 1, Senior Play Crew 1, Junior Play Cast 1, Junior Play Crew 1, Mixed Chorus 1, Glee Club 1, A Capella 1, Pep Club 1, L. Club 3, All School Show 3, Thespian Society 2.

DONNA ALTMAN

Honor Roll 1, Student Council 1, Senior Play Cast 1, Senior Play Crew 1, Junior Play Crew 1, Band 3, Pep Club 3, G.A.A. 4, Officer 1, Home Ec. Club 2, All School Show 3, Most Athletic Girl 1, G.A.A. Leadership Camp 1.



JERRY ALYEA

Boys' State Alternate 1, Class Officer 1, Basketball Major 1, Basketball Minor 3, Cross Country Major 2, Student Council 3, Senior Play Crew 1, Junior Play Crew 1, Pep Club 2, L. Club 2, Officer 1, Latin Club 3, All School Show 2, Baseball Major 1, Baseball Minor 3.

TOM ANDERSON

Golf Team 1, Senior Play Crew 1, Mixed Chorus 1, Pep Club 1, Hammond High 1.



TED ANTHONY

Boys' State Alternate 1, Senior Play Crew 1, All School Show 1.

BUDD BALLOU

Honor Roll 1, Class Officer 1, Football Major 2, Football Minor 2, Golf Team 1, Team Captain 2, Sportsmanship Award 1, Student Council 1, Senior Play Cast 1, Junior Play Cast 1, L. Club 2, Officer 1, Latin Club 3, Officer 1, Most Athletic Boy 1.



KAREN BARTZ

Honor Roll 3, Oral English Award 2, Girls' State 1, Homecoming Queen 1, Homecoming Court 1, May Court 1, Student Council 1, Sunshine Club 1, Senior Play Crew 1, Junior Play Crew 1, Pep Club 3, Officer 1, G.A.A. 4, Latin Club 3, Officer 1.

RUDY BENDA

Honor Roll 1, Senior Play Crew 1, Pep Club 2, Latin Club 3, Baseball Minor 2.

DANIEL BENTLEY

Senior Play Crew 1, Pep Club 1, F.A.A. 2, Metea 1.

ARLENE BIRD

Honor Roll 3, Girls' State 1, Homecoming Court 1, May Court 1, Student Council 2, Officer 1, Senior Play Cast 1, Junior Play Cast 1, Mixed Chorus 2, Glee Club 1, A Capella 1, Pep Club 3, G.A.A. 4, Home Ec. Club 2, Officer 1, All School Show 3, Most Versatile Girl 1, Thespian Society 2.

MARY ANN BOLT

Honor Roll 1, Home Ec. Club 1, Lowellette Staff 1.

BOB BROE

Pep Club 1, Latin Club 1, Camera Club 1.

LAURA BROWN

Morton High School 3.

LINDA BURGER

Cheerleader 1, Student Council 1, Sunshine Club 4, Junior Play Crew 1, Mixed Chorus 2, Glee Club 1, A Capella 1, Pep Club 2, G.A.A. 3, All School Show 4.

MARVIN BURGESSON

F.F.A. 4.

BOB BYDALEK

Senior Play Crew 1, Junior Play Crew 1, A Capella 1.



CARL CHESNER

Senior Play Crew 1, Junior Play Crew 1, Pep Club 2.



WAYNE CHILDRESS

Honor Roll 2, Cheerleader 1, Senior Play Cast 1, Senior Play Crew 1, Junior Play Cast 1, Junior Play Crew 1, Pep Club 2, Latin Club 1, All School Show 4.



JANET CLARK

Senior Play Cast 1, Junior Play Cast 1, Mixed Chorus 1, Glee Club 1, Pep Club 4, G.A.A. 4, Officer 1, Latin Club 2, Officer 1, Home Ec. Club 2, All School Show 4.



KATHRYN CORNING

Honor Roll 1, G.A.A. 1, Home Ec. Club 2.



KATHLEEN COTTER

Senior Play Crew 1, Junior Play Crew 1, Glee Club 1, Home Ec. Club 1, All School Show 1.



FLOYD COX

Sunshine Club 4, Senior Play Crew 1, Mixed Chorus 1, Glee Club 1, A Capella 2, All School Show 1.



DELLA ROSE CRONKHITE

Honor Roll 3, Girls' State Alternate 1, Senior Play Cast 1, Junior Play Cast 1, Glee Club 1, Pep Club 3, G.A.A. 4, Home Ec. Club 2, Officer 1, All School Show 4, Lowellette Staff 1, Thespan Society 1, Officer 1.





SANDA CRONTZ

Senior Play Crew 1, Junior Play Crew 1, Mixed Chorus 1,  
A Capella 2, Pep Club 2, Home Ec. Club 2.

JUDY DANCE

Sunshine Club 4, Officer 1, Senior Play Crew 1,  
Junior Play Crew 1, Mixed Chorus 2, Glee Club 1,  
Pep Club 3, G.A.A. 1, Home Ec. Club 2, All  
School Show 4, Lowellian Staff 1, Best Girl Dance  
of L.H.S.

WILLIAM DAUBER

Senior Play Crew 1, All School Show 1.

CAROL DAVIS

G.A.A. 1, Latin Club 1.

KEITH DAWSON

Senior Play Cast 1, Junior Play Cast 1, Junior Play Crew 1,  
Pep Club 1, F.A.A. 4, All School Show 4.

CAROLE DIDDIE

Honor Roll 1, Cheerleader 2, Senior Play Cast 1,  
Junior Play Cast 1, Mixed Chorus 2, Glee Club 1,  
Pep Club 3, G.A.A. 4, Officer 2, Home Ec. Club 2,  
All School Show 4, Miss L.H.S.

RONALD DUNBAR

Football Major 1, Junior Play Cast 1, Pep Club 2.

DICK DUNCAN

Senior Play Crew 1, Pep Club 1, F.A.A. 2, Latin  
Club 1.





CATHERINE ERB

Senior Play Crew 1, Junior Play Crew 1, Mixed Chorus 1,  
A Capella 1, Pep Club 3, G.A.A. 4, Latin Club 1, All  
School Show 3, Thespian Society 1.

PAT GOODWIN

Junior Play Crew 1, Mixed Chorus 2, Glee Club 1,  
All School Show 2.

ED GRAHAM

Band 4.

MARY LOU GROSS

Honor Roll 1, Senior Play Cast 1, Senior Play Crew  
1, Junior Play Crew 1, Glee Club 1, Mixed Chorus  
1, Pep Club 2, G.A.A. 3, Latin Club 2, Home Ec.  
Club 1, Camera Club 1, Student Librarian 2, All  
School Show 3, Lowellette Staff 1, Thespian Society 1.

GEORGE HAM

Sunshine Club 4, Mixed Chorus 2, All School Show 2.

BARBARA HAMMERSLEY

Homecoming Court 2, May Queen 1, De Motte  
Public School 2.

TIM HENRY

Senior Play Crew 1.

RONALD HERZ

Football Major 1, Football Minor 2, Track Minor 2,  
F.A.A. 3, Officer 2.



DAVID A. HILZLEY

Team Manager 1, Senior Play Crew 1, Band 2, All School Show 1.



CAROLYN A. HONEYWELL

Senior Play Crew 1, Mixed Chorus 1, Glee Club 1, A Capella 2, G.A.A. 1, Latin Club 2, Home Ec. Club 1, All School Show 1.



KENNETH HORTON

Track Minor 2, Cross Country Minor 1, Mixed Chorus 2, Glee Club 1, A Capella 1, All School Show 1.



JUNE JOHNSTON

Honor Roll 1, Girls' State Alternate 1, Senior Play Cast 1, Junior Play Cast 1, Band 4, Solo & Ensemble Contest 4, All School Show 1.



DAVID JULIAN

Senior Play Crew 1, A Capella 1.



ROBERT KALEMBA

Senior Play Crew 1.



PAUL KIRCHENSTEIN

Football Minor 1, Track Major 2, Cross Country Major 2, Team Captain 1, Sportsmanship Award 1, Junior Play Cast 1, Junior Play Crew 1, L. Club 3.



ROBERT KOZLOWSKI

Junior Play Cast 1, Mixed Chorus 2, A Capella 2, Solo & Ensemble Contest 2, Camera Club 1, Officer 1, All School Show 1.



ELINE LAMP

Senior Play Crew 1, Mixed Chorus 1, A Capella 2, Pep Club 2, G.A.A. 3, Home Ec. Club 1, All School Show 1.



MONA LANE

Senior Play Crew 1, Junior Play Crew 1, Mixed Chorus 1, Pep Club 2, G.A.A. 3, Student Librarian 2, All School Show 2.

GEORGE LEVANDE

Honor Roll 2, Boys' State 1, Football Major 2, Football Minor 2, Track Minor 2, Student Council 1, Sunshine Club 3, Senior Play Crew 1, Junior Play Cast 1, Band 4, Pep Club 1, L. Club 2, Latin Club 1, Officer 1, Most Intellectual Boy of L.H.S. 1.



JOHN LINDEMER

Boys' State Alternate 1, Senior Play Crew 1, Student Council 1, Junior Play Cast 1, A Capella 2, Pep Club 1.

LUKE LUCHENE

Football Minor 2, Senior Play Crew 1.



PAT LUCKIEWICZ

May Court 1, Senior Play Cast 1, Junior Play Cast 1, Mixed Chorus 2, Glee Club 1, Pep Club 4, G.A.A. 4, Home Ec. Club 2, Officer 1, All School Show 2.

JOHN McKESSON

Senior Play Cast 1, Junior Play Cast 1, Mixed Chorus 1, Glee Club 1, A Capella 1, Latin Club 1, All School Show 2, Thespian Society 2.



ROBERT MAHONE

Honor Roll 3, Boys' State 1, Senior Play Cast 1.



**BILL MARSHALL**

Football Major 4, Track Minor 1, Senior Play Cast 1,  
Junior Play Cast 1, Pep Club 2, L. Club 4, Camera Club 1.

**RALPH MASSOTH**

Senior Play Crew 1, Junior Play Crew 1, Pep Club  
2, Camera Club 1, All School Show 1.

**LARRY MIDKIFF**

Senior Play Crew 1, Junior Play Crew 1.

**JOYCE MITSCH**

Sunshine Club 4, Officer 1, Senior Play Crew 1,  
Junior Play Crew 1, Band 4, G.A.A. 4, Pep Club 4,  
Latin Club 1, Home Ec. Club 2, All School Show 4.

**TOMMY MOORE**

Wrestling Major 2, Senior Play Crew 1, Junior Play Cast 1,  
Pep Club 2, Camera Club 1, Spanish Club 1, Knox High  
School 2.

**DOREEN MEYERS**

Senior Play Crew 1, Junior Play Crew 1, Mixed  
Chorus 1, A Capella 1, Pep Club 2, G.A.A. 3,  
Home Ec. Club 1, All School Show 3.

**BARBARA NIEDERT**

Junior Play Crew 1, Mixed Chorus 1, Pep Club 1, G.A.A.  
G.A.A. 2, All School Show 1.

**CATHERINE NICHOLS**

Sunshine Club 1, Senior Play Crew 1, Junior Play  
Crew 1, Mixed Chorus 1, Glee Club 1, Pep Club  
2, G.A.A. 4, Latin Club 2, Home Ec. Club 1,  
Student Librarian 1, All School Show 4, Lowellette  
Staff 1, Rhythmic Choir 1, Spanish Club 1.



PAT O'CONNELL

Class Officer 3, Football Minor 2, Senior Play Cast 1,  
Senior Play Crew 1, Junior Play Cast 1, Junior Play  
Crew 1, Pep Club 1, Officer 1, Latin Club 2.

DOROTHY PARAT

Home Ec. Club 2.

LYLE PATCHETT

Honor Roll 1, F.F.A. 4, Officer 3, Baseball Minor 1.

DICK PHELPS

Class Officer 1, Basketball Major 1, Basketball  
Minor, Cross Country Major 1, Cross Country Minor  
1, Sunshine Club 4, Officer 1, Senior Play Cast 1,  
Junior Play Cast 1, Junior Play Crew 1, A Capella 2,  
Mixed Chorus 1, Pep Club 4, Officer 1, L. Club 1,  
Most Versatile Boy of L.H.S. 1.

KEN PREVO

Senior Play Cast 1, Senior Play Crew 1, Junior Play Crew  
1, Pep Club 1, Latin Club 3.

DENNIS QUALKINBUSH

Junior Play Cast 1, Junior Play Crew 1, Band 3, Pep  
Club 2, Latin Club 2, All School Show 3, Spanish  
Club 1, Hammond High 1.

PAT QUASEBARTH

Senior Play Crew 1, Junior Play Crew 1, Glee Club 1,  
Home Ec. Club 2, All School Show 1.

GENE REED

Senior Play Crew 1, Junior Play Crew 1, Pep Club  
2, Griffith High School 2.





JANICE REJHON

May Court 1, Senior Play Crew 1, Junior Play Cast 1, Pep Club 2, G.A.A. 2, Home Ec. Club 2, Student Librarian 1.

ALICE RHODE

Senior Play Crew 1, Junior Play Cast 1, Band 2, Solo & Ensemble Contest 3, Pep Club 1, G.A.A. 3, Home Ec. Club 2, All School Show 2, North Judson High School 1.




LINDA ROBERTS

Honor Roll 4, U.S. History Award 1, Girls' State 1, Homecoming Court 2, Student Council 3, Officer 2, Senior Play Cast 1, Junior Play Cast 1, Band 4, Pep Club 4, Cheerleader 4, G.A.A. 4, All School Show 4, Lowellian Staff 1, Most Versatile Girl 1, Best Dressed Girl 1.

CHUCK RUBARTS

Senior Play Cast 1, Senior Play Crew 1, Junior Play Crew 1, Mixed Chorus 1, Glee Club 1, A Capella 2, Pep Club 2, Camera Club 1, All School Show 3.



CAROLYN SUE SAVAGE

Honor Roll 2, Senior Play Cast 1, Senior Play Crew 1, Junior Play Cast 1, Junior Play Crew 1, Mixed Chorus 1, Pep Club 3, G.A.A. 2, Camera Club 1, Officer 1, All School Show 2, Lowellian Staff 1, Lowelllette Staff 1, Thespian Society 1, Officer 1.

PHYLLIS SCHREIBER

Senior Play Crew 1, Junior Play Crew 1, Mixed Chorus 1, Glee Club 1, A Capella 1, Pep Club 2, G.A.A. 1, All School Show 2.



ARNOLD SCHULTE

Honor Roll 2, Oral English Award 2, Football Major 2, Football Minor 2, Senior Play Cast 1, Senior Play Crew 1, Junior Play Crew 1, Junior Play Cast 1, Pep Club 2, Officer 1, L. Club 2, Latin Club 3, All School Show 3, Thespian Society 2.

EDDIE SHIELDS



SAM SLAMAN

Senior Play Crew 1, Junior Play Cast 1, Band 4, Junior Play Crew 1, Pep Club 2, Latin Club 2, All School Show 3, Thespian Society 1, Officer 1, Spanish Club 1.

KEN SMITH

LEO SMITH

Peoria Manual High School 3.

LAVERNE SNYDER

Honor Roll 4, Senior Play Crew 1, Junior Play Cast 1, Pep Club 2, G.A.A. 4, Home Ec. Club 2, Student Librarian 1, Lowellette Staff 1.

FRED SPEICHERT

Senior Play Crew 1, Junior Play Cast 1, Junior Play Crew 1, Mixed Chorus 2, A Capella 1, Solo & Ensemble Contest 1, Pep Club 2, All School Show 1, Irving Junior High School 1.

PAUL STEWARD

Honor Roll 4, U.S. History Award, 1, Boys' State 1, Football Major 4, Basketball Minor 1, Track Major 4, Senior Play Cast 1, Junior Play Cast 1, Pep Club 1, L. Club 4, Latin Club 3, Camera Club 1, All School Show 4, Best Boy Dancer 2, Thespian Society 1.

RONALD STEVENS

Senior Play Crew 1, Hammond High 3.

SHIRLEY SURCHIK

Honor Roll 2, Girls' State Alternate 1, May Court 1, Senior Play Crew 1, Junior Play Crew 1, Glee Club 1, Pep Club 1, G.A.A. 4, Home Ec. Club 2, All School Show 2.



DAVID SUTTON

Football Major 1, Football Minor 3, Track Minor 1, Senior Play Crew 1, F.F.A. 3, Officer 1, L. Club 1, All School Show 1.

PAT TAYLOR

Senior Play Crew 1, Junior Play Crew 1, Pep Club 1, G.A.A. 1, Home Ec. Club 2.

JEANNE TEMPLIN

Honor Roll 4, Girls' State Alternate 1, Class Officer 1, Student Council 1, Senior Play Cast 1, Junior Play Cast 1, Glee Club 1, A Capella 1, Solo & Ensemble Contest 1, G.A.A. 4, Latin Club 2, All School Show 2, Thespian Society 1, Spanish Club 1.

JANET THEIS

Senior Play Crew 1, Glee Club 1, Pep Club 1, G.A.A. 4, Home Ec. Club 2, All School Show 3, Lowelllette Staff 1.

JIM TULLY

Class Officer 3, Team Captain 1, Sportsmanship Award 1, Student Council 1, Sunshine Club 4, Senior Play Cast 1, Junior Play Cast 1, Pep Club 1, L. Club 3, Officer 1, Mr. L.H.S. 1, Most Popular Boy 1.

KAREN TYLER

Honor Roll 2, D.A.R. Award 1, G.A.A. 2, Home Ec. Club 2.

LOIS VAN WIENEN

Senior Play Crew 1, Junior Play Crew 1, Glee Club 1, Pep Club 4, Latin Club 1, All School Show 2.

GRANT WEDDING

Senior Play Crew 1, A Capella 1, F.F.A. 2.





DENNIS WERBLO

Honor Roll 1, Senior Play Crew 1, Junior Play Crew 1,  
Mixed Chorus 3, Glee Club 1, All School Show 1.



MARTHA WILSON

Junior Play Crew 1, Majorette 1, Pep Club 1  
G.A.A. 2, Home Ec. Club 2, All School Show 2,  
Pittsfield High School 2.



CHRISTINE ZATORSKI

May Court 1, Senior Play Cast 1, Senior Play Crew 1,  
Mixed Chorus 1, Glee Club 1, Pep Club 1, G.A.A. 3,  
Camera Club 1, All School Show 4, Lowellian Staff 1,  
Lowellette Staff 1, Thespian Society 2, Thespian Officer  
1, Rhythmic Choir 1, Spanish Club 1.



JOANNE ZUMMALLEN

G.A.A. 1.



BOB CONRAD



TIM HENRY

Senior Play Crew 1.



NANCY GAGNON





Tom Moore



Linda Roberts



Carolyn Savage



Robert Mahone



Judy Dance



Denny Qualkinbush



Chris Zatorski



Donna Altman



Paul Steward



Della Rose Cronkhite



Shirley Surchik



Ted Anthony



Pat Luckiewicz



Janet Theis



Marvin Burgesson



Joanne Zum Mallen



Carol Davis



Carolyn Honeywell



Ken Horton



Phyllis Schriber



Carole Diddie



Cathy Nichols



Rick Speichert



Karen Bartz



Joyce Mitsch



Floyd Cox



Doreen Meyers



Tom Anderson



Dick Phelps



Sandra Crontz



LaVerne Snyder



John McKesson



Janice Rejhon



Karen Tyler



Pat Goodwin



Mary Lou Gross



David Julian



Arlene Bird



Jerry Alyea



Jeanne Templin

## SENIOR FAREWELL

As Freshies we were mixed up and quite confused  
And - as we felt then - by the Seniors, - abused  
Live we did - through a tough initiation  
To belong at last to the Sophomore delegation

As Sophomores we were more at ease  
We studied hard and tried to please.  
We picked our sweaters late in the fall  
The prettiest yet as agreed by all.

Then to "Angelic Juniors" we proceeded  
Our rings were just the thing we needed  
At the Prom we made a Palace Ball appear  
An enchanting dream to remember for years.

Sadly and yet gladly too  
How fast the time passes - we want it slow  
We've had a good time at Lowell High  
We'll remember always as years go by  
The patience of the teachers who helped us through

To Lowell High the class of '58 will  
remain always true.

By: Carolyn Sue Savage

JUNIORS





John Herbst  
President



Bill Underwood  
Vice President



Sandra Brown  
Secretary



Sponsors

Standing: Mr. Ham, Mr. Schuyler, Mr. Frisz. Seated: Mr. Jones, Miss Wilcox, Mrs. Heatherington.



Barbara Alexander  
Gordon Alyea  
Joe Alyea  
Roberta Anderson  
Roger Armstrong



Venetta Atwood  
Joyce Bailey  
Liz Bailey  
Edda Balze  
Curtis Bartholomew



Nancy Lou Bennett  
Ernest Bevin  
Gene Black  
Mike Boyd  
Thomas Braun



LeRoy Brockway  
David Brown  
Sandra Brown  
Kenneth Buchmeier  
Louie Burgess



JoAnne Burke  
John Burrigt  
Joyce Clark  
Larry Clark  
Bill Cody



Pat Corning  
Rex Cummins  
Sharon Cunningham  
Shirley Cunningham  
Carolyn DeLoe





Ray Dodge  
Don Domelle  
Jack Eaker  
Susan Eastling  
Martin Egelston



Terresia Ellis  
Ralph Fetsch  
Eddie Foster  
Nancy Fredregill  
Barbara Gault



Loren Gidley  
Tom Grant  
Marylou Graves  
Willia Greathouse  
Claudia Grover



Ella Gunn  
Sandra Hafel  
Leonard Halfman  
Mike Hall  
Judy Hallier



Donald Hamann  
Ed Hamilton  
Ronnie Hardesty  
Sherry Harkabus  
John Herbst



Judy Holland  
Judy Hornickel  
Joyce Horton  
Pat Huppenthal  
Les Johansen





Carl Johnsen  
Robert Joyce  
Donald Jurs  
Agnes Kapitan  
Mary Kasparian



Bob Kenney  
Duke Kintz  
Lynn Kleckner  
Jim Klein  
Joan Kopaczewski



Rosemary Kretz  
Hans Kroll  
Jim Lane  
Ronald LeMarble  
Richard Livengood



Tom Logan  
Nancy Love  
Bill Marlowe  
Glenna McGhee  
Robert McKesson



Frank McLean  
Cecil Meadows  
Jim McMahon  
Mary Lou Melcher  
Chuck Menefee



Kristyn Miller  
Bette Miller  
Joan Miller  
Larry Milton  
Mick Moore



George Nance  
Pat Palmer  
Shirley Patton  
John Percy  
Dinah Phillips



Dick Platt  
David Plucinski  
Shirley Pratt  
Peggy Pridmore  
Veronica Richards



Gary Robison  
Linda Rollins  
Sally Russell  
Susan Sacco  
Randy Santy



Brian Schultz  
Marietta Schutz  
Jerry Scroggins  
Dale Sheaks  
Douglas Sheehy



Natalie Sinclair  
Barbara Slusser  
Ralph Spanier  
Judy Spry  
Marguerite Stenger



Carol Storts  
Phil Suggs  
Donna Summers  
Ken Swett  
Larry Swider



Mary Agnes Taylor  
Anita Thatcher  
Dave Thwing  
David Trueblood  
Bill Underwood



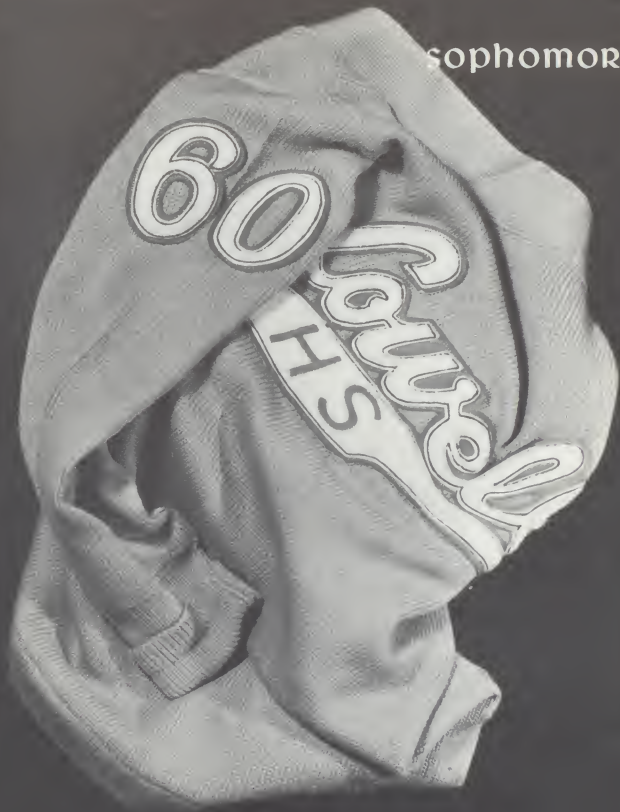
Tom Vadas  
Larry Viers  
Pat Warren  
Mary Jean White  
Ann Wicker



Yvonne Yurgilas  
Georgia Lee Zacny

# autographs

sophomores





Ken Harper  
President



Bob Benda  
Vice President



Bob Austgen  
Secretary



Sponsors

Mrs. Vandermark, Mr. Stokes, Mr. Miller, Mr. Molchan, Mr. Moretz, Mrs. Sisson.



Judie Allen  
Sharon Alyea  
James Anderson  
Robert Arnold  
Bob Austgen



Antonya Austin  
Bob Baize  
Jim Baker  
Ronald Bartlow  
Robert Benda



Elvira Bentley  
Caren Black  
Judy Blaker  
Peggy Bostian  
Dean Brown



Joann Burrig  
Nancy Carlson  
Molly Chan  
Sandy Chapman  
Ed Chelmis



Dennia Cokenour  
Judy Colony  
Cynthia Coons  
Martha Copelin  
Barbara Corlsen



Sandy Cox  
Kenneth Craft  
Jerry Cross  
Jim Davis  
Lois Demerling





Georgia Dickerson  
 Vernon Dowler  
 Danny Ebert  
 Ronnie Ebert  
 John Edmondson



Marilyn Ellis  
 Ronald Ellis  
 John Erb  
 Marjorie Feddle  
 Lois Foster



Danny Fox  
 Dick Fuller  
 Tom Gollings  
 Nancy Gordon  
 Sue Gordon



Irene Graham  
 Norman Grieger  
 Carolyn Gritten  
 Autry Haecker  
 Janice Hafel



Pat Hamilton  
 Sharon Hammersley  
 Ann Harder  
 Ken Harper  
 Ben Harrison



Marilyn Hartley  
 Wayne Hayden  
 Henry Henke  
 Phoebe Henry  
 Ken Henson





Jim Herbst  
Gloria Herr  
Bruce Hill  
Larry Hine  
Janet Hittle



Donald Hofferth  
Joyce Holtz  
Marvanell Honeycutt  
Doris Howard  
Sandra Huesch



Mary Lynn Hunter  
Connie Huppenthal  
Joyce Hutton  
Virginia Hyatte  
Hunter Imes



Jim Johnson  
Larry Johnson  
Sharon Jones  
Cecil Julian  
Stuart Juuti



Pat Kasper  
Darrel Keith  
Valeta Kendall  
James Kenning  
Judy Kirchenstein



Jeanne Kleinke  
Barbara Krapf  
Jeanette Krapf  
Shirley Kretz  
Paul Lamp



Barbara Lappie  
Beth Laumeyer  
Barbara Lawson  
Diane Lilly  
Carol Long



Pat Lorence  
Rick Loveless  
Rosezell Loveless  
Royce Luchene  
Phyllis Luckiewicz



Chester Lutgen  
Wayne Mahan  
Willodene Mahone  
Betty Massoth  
David Meyer



Jim McGinley  
Christine Minyard  
Judy Morrison  
Margaret Moyer  
Luella Mueller



Rita Mueller  
Carole Munde  
Bill Munde  
Harold Mussman  
Elsie Nance



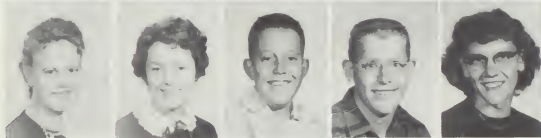
Clarence Neal  
Lonnie Nelson  
Mary Nichols  
Jean Niedert  
Janet Nomanson



Judie Nomanson  
Pete O'Dea  
Patricia Pace  
Lester Parker  
Virginia Parker



Jerry Pierce  
Joyce Pratte  
Tim Pratt  
Jane Quivey  
Judith Rattray



Janet Rickard  
Judy Rieke  
Eddie Rose  
Randy Ruge  
Delores Russell



Agnes Rutkowska  
Bonnie Scheub  
Sandra Schontube  
George Schulte  
Rosemary Schulte



Marsha Sera  
Jerry Shelton  
John Shipley  
Don Sinclair  
Ed Snell



Julian Southerland  
Philip Spittle  
Paula Standish  
Charlene Stevens  
Joyce Stiener



Nancy Stoll  
Wilford Stratton  
Phillip Summers  
Ronnie Sykora  
Sandra Turner



John Tuttle  
Lee Usher  
Linda Van Horn  
Jim Van Wienen  
Jerry Wagner



Gilburn Wedding  
Sharon Wehrenberg  
Martha Welches  
Frances Wernes  
Gary White



Alan Wietbrock  
Betty Jo Wisler  
Darlene Witt  
Linda Yahl  
Jerry Young



Paul Zander



ABSENTEES: Left to Right: Robert Taylor, Charles Roush, Jean Wagner,  
Giles Sassville

# Your Health and Safety



FOURTH EDITION

# MODERN BIOLOGY

MOON · MANN · OTTO

A pencil and a ruler are positioned diagonally across the lower right portion of the page. The ruler is a standard wooden ruler with markings in inches and centimeters. The pencil is a standard wooden pencil, oriented vertically relative to the ruler.

freshmen



Jack Wilson  
President



Dick Nomanson  
Vice President



Joan Templin  
Secretary



Sponsors

Mr. Baker, Mr. Frederick, Mrs. Nichols, Miss Thompson, Miss Prysock, Mr. Klein.





Gary Alexander  
Lois Altman  
Donna Anderson  
Joyce Anderson  
Sharon Anthony



Merry Arnold  
Kane Benson  
Sharon Bergn  
Jane Berry  
Zelda Berry



Michelle Black  
Sharon Black  
Karen Blaker  
Ruth Boggs  
Carl Borem



Ernest Bradbury  
Sherry Bradley  
Dan Breckling  
Dallas Brown  
Darlene Brown



Pat Brown  
Warren Brown  
LaVerne Bruce  
Tom Brugh  
Joan Brumbaugh



Diana Cannon  
Alice Carter  
Donald Cawitney  
Louise Chambers  
Sue Childress





Carol Clark  
 Clifford Clark  
 Judy Anne Clark  
 Millard Clark  
 Ronald Clinton



Tyrone Clinton  
 Dale Conrad  
 Jim Cotter  
 Alfred Cottingham  
 Marie Cummins



Janice Davis  
 Shirley DeVries  
 Leona Dickens  
 Jean Doty  
 Andrea Downing



Carol Drake  
 Richard Drew  
 Larry Drinsk  
 Janette Feddeler  
 Patricia Foster



John Fraley  
 Gene Fuller  
 Judy Gagne  
 Jack Gagnon  
 Robert Gembala



Rosanne Genge  
 Joyce Gerold  
 Judy Gerold  
 Bob Gidley  
 John Gordon



Glenn Graves  
 Kenneth Greer  
 Lawrence Groer  
 James Gunn  
 Joe Haberzette



Chuck Halliar  
 Charles Ham  
 Ronald Hammond  
 Rodney Hanson  
 George Hardwick



Jerry Hayden  
 Carol Hein  
 Joanne Hein  
 Dick Henry  
 Eugena Henson



Billy Hicks  
 Virginia Hill  
 Carolyn Honeycutt  
 Lee Honeywell  
 Claire Hopper



John Hoshaw  
 Paul Hoshaw  
 Elmo Howard  
 Mary Howkinson  
 Kenneth Hoshaw



Karen Humpfer  
 Jim Hunley  
 Patti Hunter  
 Janet Huseman  
 Sandra Iiff



Jack Jackson  
Jacqueline Jensen  
David Johnston  
Carol Jurs  
Kemeth Justice



Lee Kaiser  
Fred Kiechle  
Betty Koch  
Jo Ann Koss  
Barbara Kretz



James Kretz  
Chris Kuiper  
Charles Kukral  
David Land  
Julia Lapinski



Douglas Lawson  
John Lear  
Larry Love  
Nancy Love  
George Malo



Dennis Malone  
Diane Manno  
Ronnie Manno  
Barbara Martens  
Sandra Martin



Billy Marvel  
Rosie Matury  
Keith McCloud  
Wayne McGhee  
Marion Midkiff



Brice Milakovic  
Kathy Miller  
Jimmy Mink  
Vivian Mital  
John Nease



Jerry Nichols  
Sue Nicholson  
James Nolan  
Dick Nomanson  
John Novak



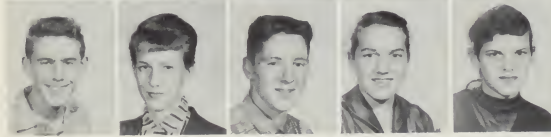
Kathy O'Dea  
Delbert Palacz  
Dorothy Palmer  
Ronald Parat  
Jerry Parker



John Parks  
Lanny Parrish  
Clyde Patchin  
Joyce Patchin  
Carol Pavich



Mike Pawlowski  
Larry Perfetti  
Carol Peterson  
Carol Phillips  
George Phillips



James Pierce  
Christine Pigg  
John Pletcher  
Marilyn Quasebarth  
Nina Quasebarth



Donald Raby  
Julia Radaszewski  
Bob Ragon  
Charles Reel  
Bob Renwick



Grant Reusze  
Mariann Rhode  
Cecelia Richards  
Paul Richardson  
Donna Richmond



Ralph Ridtman  
Mary Kay Rieke  
Bernadine Rietma  
Brenda Roberts  
Terry Rudolph



Dick Ruge  
Janice Rupar  
John Russel  
Lynn Russell  
Sharon Sakinsky



Jim Sautter  
George Savage  
Charlotte Schulz  
Ronald Slinger  
Bob Smith



Carole Smith  
Carol Spry  
Sharon Stack  
Susan Starman  
Teddy Stokes



Lewis Stowell  
Dorothy Strickhorn  
David Stuhlmacher  
Barbara Sullivan  
Roger Sund



Frances Surchik  
Jerry Sutherland  
Charles Suttinger  
Bonnie Swett  
Connie Swett



John Talley  
Carol Taylor  
Martha Taylor  
Robert Taylor  
Joan Templin



Dorothy Vadas  
Sharon Vajdich  
LaVern Valois  
Toni Jo Vandermark  
Larry Vaughn



Malvin Wald  
Glen Ward  
Donna Wease  
Fred Weddle  
Judy Werner



Erling Wernes  
Nancy Whitlow  
Sandra Wickenhause  
Harold Wicker  
Florence Widdel





Jeff Wilk  
Darlene Willi  
Dennis Willia  
Warren Willy  
Becky Wilson

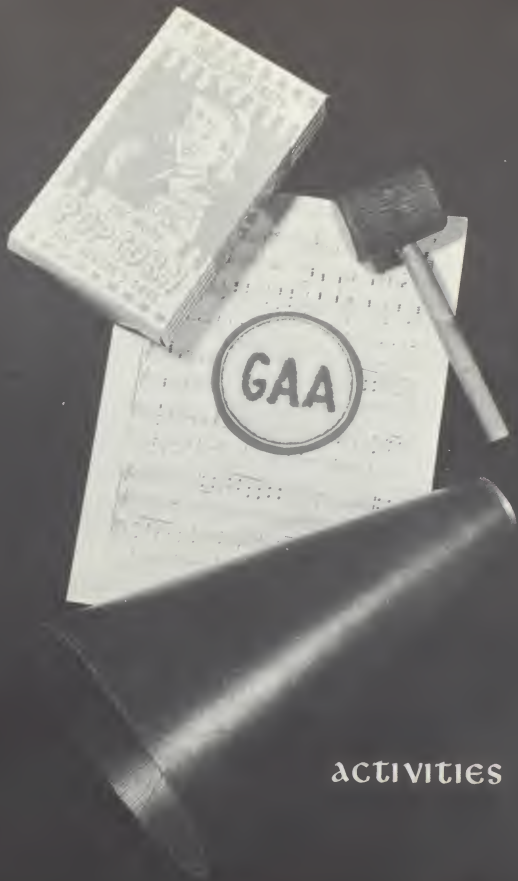


Bonnie Wilson  
Jack Wilson  
Roger Wilson  
Karen Woodke  
Sharon Woodke



Virginia Zacny  
Karen Zander  
Gloria Zbinden





activities

# outstanding students



Karen Bartz



Arlene Bird



Linda Roberts



Shirley Surchik

## GIRL'S STATE

## BOY'S STATE



George Levande



Robert Mahone



Paul Steward

## GIRL'S STATE ALTERNATES

## BOY'S STATE ALTERNATES



Della Rose Cronkhite, Jeanne Templin, June Johnston.



Jerry Alyea, John Lindemer, Ted Anthony.



Paul Steward, First Place Winner  
Rotary International Oratorical Contest



Glen Allen, Second Place Winner  
Rotary International Oratorical Contest



F. F. A. Contest Winners  
Seated: Ronnie Ellis, Jim Novak, Larry Love,  
Standing: David Meyer, Lyle Patchett, Paul Zanders, Lee Kaiser,  
Kenny Craft.



Linda Roberts, First Place Winner  
U. S. History Award



Paul Steward, Second Place Winner  
U. S. History Award



Karen Tyler  
D. A. R. Award Winner



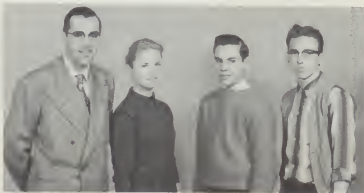
Janet Theis  
L. H. S. Homemaker

## honor roll



Row 1: Marion Midkiff, Barbara Alexander, Andrea Downing, Donna Richmond, Mary Alice Howkinson, Janice Rugar, Sally Russell, Mary Agness Taylor. Row 2: Charles Kukral, Gary Alexander, Kenneth Justice, George Mälo, Wilford Stratton, Sherry Harkabus, Linda Roberts, Carole Diddie, Martha Copelin, Barbara Duncan. Row 3: Willodene Mahone, Judy McConnell, Connie Huppenthal, Joyce Clark, Georgia Dickerson, Frances Wernes, Barbara Martens, Judy Gerold, Barbara Sullivan, Toni Jo Vandermark. Row 4: Pat Lorence, Pat Kasper, Mary Nichols, Jeanne Kleinke, Judy Riecke, Florence Widdel, Karen Woodke, Frances Surchik, Karen Tyler, Pat O'Connell. Row 5: Robert Mahone, Laverne Snyder, Della Rose Cronkhite, Chris Zatorski, Jeanne Templin, Carolyn Savage, DeJores Russell, Joe Haberztle, Brenda Roberts, Joan Templin. Row 6: Mary Lou Gross, Robert Arnold, Stuart Juuti, Julian Southerland, Bruce Hill, George Levande, Arlene Bird, Ronnie Ellis, Karen Bartz, June Johnston, Paul Steward.

## WRITER'S CLUB



Mr. Martin, Pat Lorence, Larry Love, Duke Kintz.

# student council



Linda Roberts  
President



Mary Taylor  
Vice-President



Arlene Bird  
Secretary-Treasurer



Miss Prysock and Mr. Ray  
Sponsors



Seated- Miss Prysock, Mary Agnes Taylor, Linda Roberts, Arlene Bird, Mr. Ray  
Row 1 - Tom Gollings, Georgia Dickerson, Sherry Harkabus, Sharon Cunningham, Judy Colony, Jeanne Templin,  
Karen Bartz, Donna Altman, Kris Miller, Dave Brown  
Row 2 - John Herbst, Ed Snell, Janet Nomanson, Jim Tully, John Lindemer.

# sunshine club

president

vice-pres.

sec.-treas.



Roger Armstrong



Judy Dance



Charlene Stevens



- Row 1: Joyce Hutton, Sandra Turner, Sharon Black, Marion Midkiff, Dick Ruge, Gary Alexander, Paula Standish, Joyce Bailey
- Row 2: Mrs. Hetherington, Barbara Duncan, Susan Eastling, Claire Hopper, Donna Summers, Caren Black, Judy Nomanson
- Row 3: Judy Gerold, Cathi Nichols, Mary Kay Riele, Billie Hicks, Ronnie Sykora, Judy Spry, Joyce Clark, Charlene Stevens
- Row 4: Carl Johnson, Ronnie Manno, Joan Templin, Jack Wilson, Ernest Bevins, Joyce Mitsch, Dean Brown, Gene Fuller
- Row 5: Henry Henke, Randy Ruge, Roger Armstrong, Dick Pheleps, Bob Austgen, Karen Bartz, George Levande, Floyd Cox, John Shipley



# G.A.A.



G.A.A. — JUNIORS AND SENIORS — SEATED, AT TABLE: Mary Jean White, Donna Altman, Carole Diddle, Janet Clark, Miss Prysock. ROW 1: Cathy Erb, Terry Ellis, Willa Greathouse, Janet Theis, Shirley Pratt, Joyce Bailey, Alice Rhode, LaVerne Snyder, Donna Summers, Barbara Alexander. ROW 2: Linda Rollins, Elaine Lamp, Joyce Clark, Kris Miller, Mary Agnes Taylor, Shirley Patton, Agnes Kapitani, Mary Kay Kasparian, Judy Hornickel, Pat Huppenthal. ROW 3: Ella Mae Gunn, Marjetta Schutz, Pat Palmer, Bette Miller, Pat Luckiewicz, Jeanne Templin, Carolyn Sue Savage, Linda Roberts, Chris Zatorski, Cathi Nichols, Nancy Love. ROW 4: Sandra Brown, Carole Stotts, Mary Lou Gross, Della Cronkrite, Shirley Surchik, Karen Bartz, Arline Bird, Joyce Mitsch, Susan Sacco, Judy Spry, Anita Thatcher, Sharon Cunningham.



G.A.A. — FRESHMEN AND SOPHOMORES — ROW 1: Bonnie Wilson, Sandra Turner, Luella Mueller, Joyce Anderson, Barbara Kretz, Shirley DeVries, Merry Arnold, Carol Phillips, Judy Kirchenstein, Sharon Woodke, Lois Altman. ROW 2: Joyce Holtz, Judy McConnell, Martha Copelin, Jane Quivry, Nancy Stoll, Cynthia Coons, Connie Huppenthal, Rosezell Lovelless, Rita Mueller, Marsha Sera, Betty Massoth. ROW 3: Phyllis Luckiewicz, Mary Nichols, Virginia Parker, Margaret Moyer, Rosemary Schulte, Georgia Dickerson, Frances Wernes, Mary Lynn Hunter, Judy Coloney, Paula Standish, Jeanne Kleinke, Judy Nonnanson, Sandra Cox. ROW 4: Judy Rieke, Sharon Alyea, Elsie Nance, Sharon Berger, Diane Manno, Karen Woodke, Frances Surchik, Sandra Martin, Barbara Sullivan, Toni Jo Vandermark, Brenda Roberts, Dolores Russell, Janet Nonnanson.



# I CLUB



President  
Jim Tully



Vice-President  
Bud Ballou



Front: Mr. Dick, Coach Morte, Coach Kliene  
Back: Coach Molchan, Coach Schuyler, Coach Baker,  
Mr. Stuart



Secretary  
Don Adam



Historian  
Loren Gidley

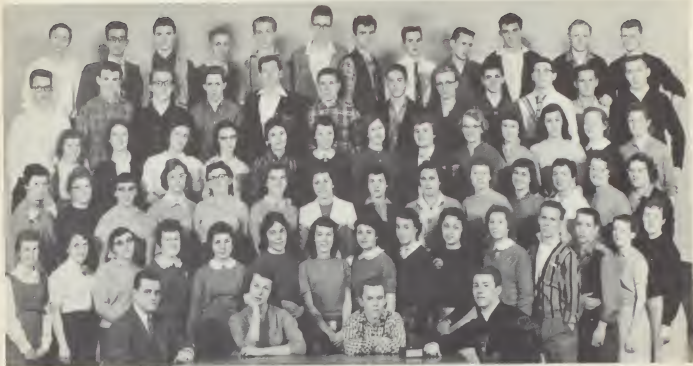


Treasurer  
Jerry Alyea



Row 1: Bud Ballou, Arnold Schulte, Tom Gollings, Tom Grant, Bob Benda, Rex Cummins  
Row 2: Paul Steward, Mike Boyd, Gary White, Jerry Pierce, Glen Allen, Ed Snell, Paul Kirchenstein  
Row 3: Jerry Alyea, Roger Armstrong, John Shipley, Bill Mundee, Jim Herbst, Dave Sutton, George Levande  
Row 4: Jim Lane, Bill Marshall, Jim Tully, Loren Gidley, Dick Pheleps, John Percy, Don Adam

# pep club



PEP CLUB — JUNIORS AND SENIORS — SEATED, AT TABLE: Mr. Klein, Karen Bartz, Pat O'Connell, Arnold Schulte. ROW 1: Terry Ellis, Shirley Pratt, Janet Clark, Janet Theis, Joyce Bailey, Linda Rollins, Natalie Sinclair, Sherry Horzakus, Mary Jean White, Sharon Cunningham, Kris Miller, Budd Ballou, Gene Reed, Judy Dance, Chris Zakark. ROW 2: Cathy Nichols, Pat Luckiewicz, LaVerne Snyder, Peggy Primrose, Carolyn Savage, Carole Diddle, Linda Roberts, Mary Kay Kasparian, Judy Hornickel, Pat Huppenthal, Bette Miller, Judy Holland, Mary Lou Melcher, Joyce Harton. ROW 3: Shirley Cunningham, Sandra Brown, Mary Lou Gross, Marjetta Schuts, Pat Palmer, Anita Thatcher, Judy Spry, Nancy Love, Donna Altman, Della Cronkrite, Janice Rejhan, Joyce Mitsch, Arlene Bird. ROW 4: Denny Qualkinbush, Ronnie Dunbar, Mike Boyd, Joe Alyea, Ernie Bevins, Ralph Maseoth, Glendal Allen, Wayne Childrees, Jerry Alyea, Rudy Benda, Paul Kirchenstein, George Levande. ROW 5: Mike Hall, Sam Salaman, Dick Phelps, Tom Anderson, Carl Cheasner, Ken Prevo, Rick Speichert, Chuck Rubarts, Tom Moore, Jim Tully, Bill Marshall, Paul Steward.



PEP CLUB — FRESHMEN AND SOPHOMORES — ROW 1: Sandra Chapman, Bonnie Wilson, Jo Miller, Sharon Stock, Andrea Downing, Mariann Rhode, Sharon Black, Rosey Matry, Virginia Zaeny. ROW 2: Willolene Mhone, Paula Standish, Sharon Wehrenberg, Marion Midkiff, Sharon Woodke, Jim Sauter, Betty Wisler, Beth Launmeyer, Patsy Pace, Martha Welches, Nancy Stoll. ROW 3: Cornie Huppenthal, Sue Gordon, Pat Kasper, Charlene Stevens, Rita Mueller, Marsha Sera, Rosemary Schulte, Margaret Moyer, Sandra Cox, Judy Nomanson. ROW 4: Joyce Hutton, Betty Maseoth, Judy Rieke, Jeanne Kleinke, Jane Quivey, Cynthia Coons, Mary Alice Hawkinson, Nancy Love, Joyce Patchin, Dianne Manno. ROW 5: Phyllis Luckiewicz, Barb Duncan, Pat Lorence, Mary Lynn Hunter, Mary Nichole, Barbara Sullivan, Karen Woodke, Mary Kay Rieke, Toni Jo Vandermork, Brenda Roberts, Dina Cannon. ROW 6: Ronnie eykora, Ronnie Manno, Joan Templin, Gloria Herr, George Schulte, Bob Benda, Margie Feddeler, Janet Nomanson, Jim Herbst, Bill Munde, Randy Rupe.

# thespian society



Carolyn Savage - President



Chris Zatorski - Vice-President



Della Rose Cronkite - Treasurer



Sam Slaman - Scribe, Karen Bartz - Secretary



Row 1: Della Cronkite, Jeanne Templin, Chris Zatorski, Mr. Martin, Sponsor, Carolyn Savage, Linda Roberts, Arlene Bird.  
Row 2: Karen Bartz, Arnold Schulte, Paul Steward, John McKesson, Keith Dawson, Sam Slaman, Glendall Allen, Georgia Zacney, and Mary Lynn Hunter.

# f.f.a.



Lyle Patchett  
President



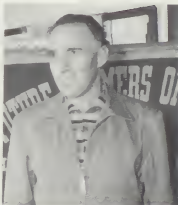
Larry Viers  
Vice President



Ron Herz Secretary  
Robert Taylor Treasurer



Harold Mussman Reporter  
Don Jurs Sentinel



Mr. Little  
Sponsor



Seated: Tim Pratt, Dan Breckling, Larry Love, Elmo Howard, Larry Perfetti, Mr. Little. Row 2: Robert McKesson, Kenny Craft, Paul Zanders, Larry Viers, Ronnie Herz, Ronnie Ebert, Bob Taylor. Row 3: Wayne Mahan, Don Jurs, Jerry Pierce, Keith Dawson, David Meyer, John Russell. Row 4: Ronnie Ellis, Gilburn Wedding, Lee Kaiser, Lyle Patchett, Harold Mussman, Jim Novak, Keith McCloud.

# home ec club



HOME EC CLUB - FRESHMEN AND SOPHOMORES - ROW 1: Nancy Carlson, Beth Launmeyer, Antonia Austin, Joyce Holtz, Darlene Witt, Agnes Rutkowski, Judy Clark, Bonnie Wilson, Sue Childress. ROW 2: Carol Jurs, Martha Copelin, Chuckie Stevens, Carol Pavich, Joanne Hine, Lois Demerling, Anne Harder, Sharon Vaidich, Nancy Love, Janet Huseman, Mariann Rhode. ROW 3: Sandra Huebsch, Sue Starman, Bonnie Swett, LaVern Bruce, Martha Welches, Rita Mueller, Frances Werras, Bonnie Scheub, Carol Phillips, Rosanne Gence, Connie Swett, Karen Zander, Carol Peterson. ROW 4: Luella Mueller, Marsha Sera, Sue Gordon, Sandy Chapman, Virginia Zacny, Sandra Martin, Carol Hine, Judy Gerold, Joyce Gerold, Gloria Zbinden, Jane Berry, Barbara Krapf. ROW 5: Sandra Schontube, Florence Widdel, Clare Hopper, Shirley Kretz, Nina Quasebarth, Jeanette Krapf, Judi Ratray, Mary Lynn Hunter, Dorothy Vadas, Sharon Anthony, Karen Woodke, Joan Brumbaugh, and Joyce Steiner.



HOME EC CLUB - JUNIORS AND SENIORS - SEATED: Mrs. Smith, Pat Luckiewicz, Mary Agnes Taylor, Arlene Bird, Della Cronkrite, Mrs. Vandermark. ROW 1: Wills Greathouse, Janet Theis, Janet Clark, LaVerse Snyder, Alice Rhode, Linda Rollins, Rosemary Kretz, Susan Eastling, Nancy Fredregill. ROW 2: Joan Kopaczewski, Sally Russell, Mary Kay Kasparian, Judy Hornickie, Sharon Cunningham, Sandra Croniz, Carol Diddie, Joyce Mitsch, Ella May Gunn. ROW 3: Judy Holliter, Nancy Love, Mzietta Schutz, Sandra Brown, Karen Tyler, Shirley Surchik, Janice Rehjon, Mary Lou Gross, Jill Zacny, Judy Stry.



# camera club



President - Bob Kozlowski



Vice-President - Sandra Brown



Secretary - Carolyn Savage



Treasurer - Pat Palmer



Seated: Mr. Frisz, Carolyn Savage, Linda Rollins, Judy Allen, Pat Palmer, Sandra Brown  
Row 1: Clifford Clark, Bill Hicks, Ted Becker, Larry Love, Bill Cody, Shirley Cunningham, Dean Brown, Ronnie Bartlow, Chris Zatorski, Paul Steward, Tom Moore, Doug Sheey, Bob Kozlowski

# Latin club



President - George Levande



Secretary-Treasurer - Bob Benda



Vice-President - Janet Clark



Row 1: Michelle Black, Bonnie Wilson, Sandra Turner, George Malo, Chuck Ham, Dick Ruge, Janet Clark, Pat O'Connell, Budd Ballou, Sharon Bradley, Sharon Woodke, Carol Jean Phillips. Row 2: Mr. Fredrick, Irene Graham, Barbara Duncan, Natalie Sinclair, Judy Holland, Shirley Pratt, Sherry Harkabus, Mary Jean White, Barb Alexander, Willodean Mahone, George Dickerson, Linda Van Horn, Shirley Cunningham, Linda Rollins. Row 3: Marg Agnes Taylor, Joyce Clark, Shirley De Vries, Glenna McGhee, Cathy Nichols, Pat Luckiewicz, Carol Diddie, Linda Roberts, Jean Klienke, Jane Quivey, Cynthia Coons, John McJesson, John Talley, Jeanne Templin, Mary Lynn Hunter. Row 4: Sharon Burger, Mary Alice Howkinson, Francis Wernes, Carol Davis, Bob Ragon, Sandra Martin, Barb Sullivan, Karen Woodke, Joan Brumbaugh, Pat Kasper, DeLores Russell, Toni Jo Vandermark, Mary Kay Rieke. Row 5: Bob Benda, Pat Palmer, Carol Storts, Sandra Brown, Dorothy Vadas, Janette Feddeler, Joan Templin, Georgia Zacney, Susan Sacco, Betty Miller, Mary Nichols, Dinah Cannon, Brenda Roberts. Row 6: Joe Alyea, Mike Boyd, Rudy Benda, Sam Slaman, Denny Qualkinbush, Marjorie Feddeler, Janet Nomanson, Jerry Alyea, Joyce Mitsch, Arnold Schulte, Dave Stuhlmacher, Rod Hansen. Row 7: Paul Steward, Bill Munde, Dwayne Hofferth, Phillip Summers, Karen Bartz, Luke Luchene, Ken Prevot, Bob Smith, George Levande, John Herbst, Jim Herbst, and Randy Ruge.



# spanish club



Row 1: Mr. Baker, Nancy Carlson, Terry Ellis, Shirley Pratt, Chris Zatorski, Linda Rollins, Wilford Stratton, Marylin Ellis, Charlene Stevens, Martha Barman, Budd Ballou. Row 2: Bette Miller, Arlene Bird, Carole Diddie, Pat Pace, Cynthia Coons, Mary Lou Melcher, Judy Holland, Jane Quivey, Della Cronkhite, Martha Welches, Pat O'Connell. Row 3: Janet Theis, Mary Lynn Hunter, Verlon Dowler, Curtis Bartholemew, Gloria Herr, Jill Zacny, Mary Nichols, Pat Kasper, Virginia Parker, Rosemary Schulte. Row 4: Pat Lorence, Bob Broe, Lonnie Nelson, Bob Benda, Ben Harrison, Julian Southerland, Tom Moore, Carol Storts, Nancy Fredigill. Row 5: Dean Brown, Jim Baker, John Percy, Jerry Young, Bruce Hill, Bill Marshall, Bill Mundee, Jim Anderson, Ronnie Dunbar.

# mixed chorus



Pianist: Glenna McGhee. Row 1: Mr. Frederick, Yvonne Yurgilas, Lois Demerling, Pat Hamilton, Judy Holland, Virginia Parker, Shiela Butler, Rosezell Loveless, Barbara Alexander, Antonja Austin. Row 2: Bob Kozlowski, Frank McLean, Dan Bentley, Rick Speichert, Tom Vadas, Dennis Werblo, Chuck Menefee, Dan Fox, Gary Alexander.



**A CAPPELLA** Row 1: Mr. Fredricks, Cathy Erb, Willa Greathouse, Donna Summers, Barbara Slexander, Shirley Pratt, Sherry Harkbus, Susan Eastling, Judy Colony, Natalie Sinclair, Agnes Rutkowski, Sandra Chapman, Paula Standish, Joyce Holtz. Row 2: Linda Rollins, Sue Gordon, Barbara Duncan, Elaine Lamp, Marguerite Stenger, Mary Kasperian, Judy Hornickel, Sandra Shontube, Sandra Cronz, Martha Coplin, Mary Jean White, Molly Chan. Row 3: Pat Huppenthal, Shirley Patton, Nancy Love, Nancy Bennett, Sharon Cunningham, Sandra Brown, Brenda Roberts, Mary Melcher, Marietta Schutz, Patty Palmer, Mary Lynn Hunter, Carolyn Honeywell. Row 4: Judy Rattray, Judy Spry, Susan Sacco, Bob Kozlowski, Dean Brown, Jim Klein, Floyd Cox, Frank McLean, Carl Johnson, Danny Fox, Arlene Bird, Roberta Anderson. Row 5: Chuck Rubarts, Keith Dawson, Eddie Foster, John Percy, Dick Phelps, John Lindemer, David Julian, Bruce Hill, Jim McMahon, Jim Johnson, Grant Wedding, Henry Henke.



**GLEE CLUB** Row 1: Mr. Jones, Judy Clark, Donna Richmond, Cecelia Richards, Andrea Downing, Joan Marsh, Carol Pavich, Sharon Black, Mariann Rhodes, Jo Miller, Joyce Gerold. Row 2: Nancy Whitlow, Janice Davis, Carol Hein, Sue Nicholson, Mary Alice Hawkinson, Sharon Vajdick, Sharon Stack, Bonnie Sweett, Carol Spry, Janet Huseman. Row 3: Marilyn Quasebarth, Susan Starman, Joanne Hein, LaVerne Bruce, Linda Russell, Connie Sweett, Carol Clark, Carol Drake, Karen Blaker, Dorothy Palmer, Carol Peterson. Row 4: Virginia Hill, Sharon Anthony, Rosanne Genge, Mary Beal, Frances Widdle, Nancy Love, Diana Cannon, Judy Gerold, Gloria Zbinden.

# CONCERT BAND



Row 1: Shirley Cunningham, Kris Miller, Row 2: Barbara Lawson, Nancy Fredregill, Jeanie Kleinke, Sandra Huebsch, Bonnie Scheub, Rosemary Schulte, Margaret Moyer, Judie Nomanson, Leona Dickens, Rosie Matury, Row 3: Dennis Cokenhaur, John Erb, Carol Taylor, Marilyn Ellis, Linda Roberts, Barbara Gault, Irene Graham, Chuck Ham, Jim Sautter, Mr. Jones, Row 4: Glenna McGhee, Mary Agnes Taylor, Mary Lynn Hunter, Carol Gritten, June Johnston, Mary Nichols, Martha Welches, Cynthia Coons, Row 5: Fred Weddle, Dolores Russell, Douglas Sheehy, Jack Eaker, Don Domelle, Ken Buchmeier, Joyce Mitsch, Phillip Suggs, Ted Becker, Row 6: Curtis Bartholemew, Hans Kroll, Denny Qualkinbush, George Levande, George Nance, Janet Nomanson, Julian Southerland, Georgia Zacny, Row 7: Dwayne Hofferth, Ernest Bevin, Sam Slaman, Jerry Shelton, Tom Logan, Mike Hall, Dick Platt, Alan Wietbrock, and Mike Mathew.

# JUNIOR BAND



Row 1: Carol Jurs, Karen Zanders, John Lear, Sharon Bradley, Virginia Zacny, Jane Quivey, Row 2: Jim Davis, Larry Clark, Bob Eskridge, Mr. Jones, Jack Jackson, Jack Gagnon, Ronnie Sykora, Dale Conrad, Ken Hoshaw, Billy Hicks.

# rhythmic choir



Row 1: Sandra Turner, Shirley Pratt. Row 2: Kris Miller, Jeanne Kleinke, Terressa Ellis, Joyce Bailey, Barbara Duncan, Mary Jean White. Row 3: Marilyn Ellis, Cathy Nichols, Mary Nichols, Mary Lynn Hunter, Linda Roberts, Paula Standish. Row 4: Sandra Brown, Chris Zatorski.

# solo and ensemble contest



Row 1: Cynthia Coons, Delores Russell, Douglas Sheehy, Georgia Zacney, June Johnston, Brenda Roberts, Mary Lynn Hunter, Carol Taylor, Mariann Rhode, Alice Rhode, Joyce Gerold, Judy Gerold. Row 2: Chuck Ham, Barbara Gault, Jill Zacney, Martha Welches, Dale Conrad, Dwayne Hofferth, Jane Quivey, Linda Roberts, Jack Jackson, Teddy Becker.



**SENIOR PLAY CAST:** Row 1: Patty Luckiewicz, Janet Clark, Carole Diddie, Linda Roberts, Carolyn Savage, Paul Steward, Arlene Bird. Row 2: Ken Prevo, Wayne Childress, Jeanne Templin, Glendel Allen, Keith Dawson. Row 3: Donna Altman, John McKesson, Robert Mahone, Dick Phelps, Della Rose Cronkhite, Chris Zatorski, June Johnston. At far right: Mr. Martin.



**SENIOR PLAY CREW:** Row 1: Larry Midkiff, Floyd Cox, George Levande, Carolyn Savage, Arnold Schulte, Glendall Allen, Chris Zatorski, Cathi Nichols, Barbara Hammersly, Carl Chesner. Row 2: Ron Dunbar, Jim Tully, Rudy Benda, La Verne Snyder, Alice Rhode, Janet Theis, Gene Reed, Budd Ballou, Pat O'Connell, Pat Quasebarth, Sandra Crotz, Ronnie Stevens, John Lindemer, Dan Bentley. Row 3: Bill Marshall, Jerry Ayles, Joyce Mitsch, Janice Rejhon, Keith Dawson, Shirley Surchik, Mary Lou Gross, Phyllis Schreiber, Tom Moore, Denny Qualknbush, David Hildley, Tom Anderson, Grant Wedding. Row 4: Don Adam, Ken Prevo, Rick Speichert, Ralph Massoth, Paul Steward, David Sutton, Sam Slaman, Richard Phelps, Karen Bartz, Donna Altman, Dennis Werblo, Bill Dauber, Bob Broe, David Julian.



# Juniors presented comedy- "too young, too old"



**CAST:** Row 1: Judy Hornickel, Kris Miller, Pat Huppenthal, Lynn Kleckner, Raymond Dodge. Row 2: Joyce Horton, Shirley Patton, Mary Agnes Taylor, Carol Storts, Bette Miller, Mary Kay Kasparian, Pat Palmer, John Herbst, Dick Platt, Joyce Clark. Row 3: Curtis Bartholemew, Judy Holland, Mary Lou Melcher, Marietta Schutz, Mr. Martin (director), Shirley Cunningham, Peggy Fridmore, Georgia Zaczny, Ernest Bevins, Sandra Brown, and Duke Kintz.



**CREW:** Row 1: Don Domelle, Glenna McGhee, Nancy Bennett, Judy Hallier, Gordon Alyea, Barbara Alexander, Nancy Love, Ronnie Hardesty. Row 2: Mary Lou Graves, Susan Sacco, Sally Russell, Ella Mae Gunn, Marguerite Stenger, Barbara Gault, Sherry Harkabus, Sharon Cunningham. Row 3: Yvonne Yurgilas, Terry Ellis, Joyce Bailey, Shirley Pratt, Dorothy Allen, Natalie Sinclair, Mary Jean White. Row 4: Bob Kenney, Jack Eaker, Joe Alyea, Roger Armstrong, Chuck Menefee, John Percy, Mike Hall, and Jim Lane.

# Lowellian staff

Since 1916, with the exception of about five years during the great depression, as regularly as the 7:50 bell rings in the morning, Lowell High's yearly messenger, the Lowellian, voices its presence.

Will there be one? What will it be like? Will there be one? How many pages will it have? Will there be one? Is it worth our money? Why has the price gone up? WILL THERE BE ONE???

And lo these many years the answer has been "yes." Through war, peace, and prosperity, Cedar Creek at ebb and Cedar Creek at flood, as much as it hurts our editorial vanity to admit, staffs may come and staffs may go, but the Lowellian goes on forever.



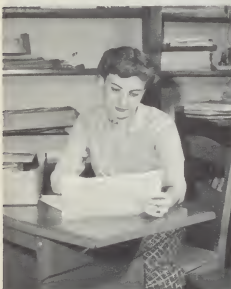
Linda Roberts Co-Editor



Chris Zatorski Layout & Design Editor



Carolyn Savage Co-Editor



Judy Dance Business Manager





# Lowellette



Karen Bartz  
Co-Editor



Mr. Ham, and Mr. Miller, Advisors



Cathi Nichols  
Co-Editor

## staff



Row 1: Mr. Ham, Chris Zatorski, Cathi Nichols, Karen Bartz, Mary Lou Gross, Mr. Miller,  
Row 2: Barbara Alexander, Donna Summers, Larry Swider, Judy Hallier, Doug Sheehy, Sherry Harkabus, Ed Snell, Mary Lou Melcher, Budd Ballou, Anita Thatcher, Roger Armstrong, Joyce Bailey, Bill Cody, Laverne Snyder.



## miss L.h.s.

Carole Diddie Senior



## MR. L.h.s.

Jim Tully Senior



## BEST LOOKING GIRL

Sherry Harkabus Junior



## BEST LOOKING BOY

Ronnie Hardesty Junior



Most Athletic Girl

Donna Altman

Senior



Most Athletic Boy

Budd Ballou

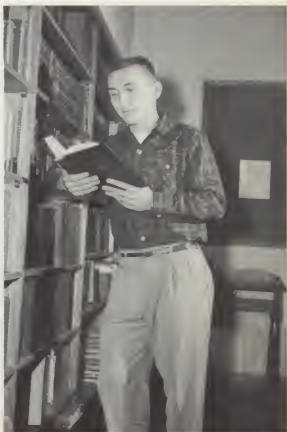
Senior



Most Intellectual Girl

Karen Bartz

Senior



Most Intellectual Boy

George Levande

Senior



most versatile girl    most versatile boy

Arlene Bird    Senior

Dick Phelps    Senior



BEST GIRL DANCER

BEST BOY DANCER

Judy Dance    Senior

Paul Steward    Senior

HER  
IMPERIAL HIGHNESS  
KAREN BARTZ  
QUEEN OF THE  
HOMECOMING



*Karen Bartz*



# homecoming court



Sandra Brown  
Junior



Terressa Ellis  
Junior



Charlene Stevens  
Sophomore



Barbara Hammersly  
Senior



Judy Rieke  
Sophomore



Nancy Love  
Freshman



Brenda Roberts  
Freshman



her royal majesty  
the queen of may

*Barbara Hammerley*





# may court



Karen Bartz



Arlene Bird



Pat Luckiewicz



Janice Rejhon



Shirley Surchik



Chris Zatorld



SPORTS



# SENIORS



Bud Ballou



Ron Dunbar



Ron Herz



George Levande



Bill Marshall



Arnold Schulte



Paul Steward



Jim Tully



Dave Sutton



VARSITY Managers - Mike Hall, Ed Hamilton, Bob Joyce. Row 1: Budd Ballou, Paul Steward, Ron Herr, Jim Tully, Bill Marshall, Ron Dunbar, Arnold Schulte, Dave Sutton, George Levande. Row 2: Coach Kliem, Jerry Pierce, Gordon Alyea, Tom Grant, Bob Benda, Jim Herbst, Henry Henke, Jim Kliem, Rex Cummins, Gene Black, Coach Molchan. Row 3: John Shipley, Bill Munde, John Percy, Ed Snell, Randy Ruge, Bob Kenny, Loren Gidley, Don Sinclair, Ralph Fetch, Leonard Hauffman.

## LOWELL COMPLETES SEASON WITH A .500 AVERAGE

The Lowell Red Devils closed the 1957 football season with 5 wins, 5 losses, and a 4-3 Calumet Conference record.

Looking sharp on defense, Lowell defeated Morocco in the season's first game. Lack of size and defense added up to victory for Griffith and Gary Edsion. The Devils started clicking against East Gary and downed this fast team with improved passing. Getting off to a bad start in both games, Lowell fell before two powerful teams - Wirt and Rensselaer. We trimmed Portage for another Conference victory, but were stumped by the Bulldogs. Playing in light snow, the Devils did very well defeating Merriville, the first time since 1948. Lowell brought the season to a spectacular close by trouncing a rough Dyer team.



|        |    |    |             |
|--------|----|----|-------------|
| Lowell | 20 | 0  | Morocco     |
| Lowell | 6  | 21 | Griffith    |
| Lowell | 6  | 25 | Gary Edison |
| Lowell | 12 | 7  | East Gary   |
| Lowell | 0  | 26 | Gary Wirt   |
| Lowell | 26 | 7  | Rensselaer  |
| Lowell | 6  | 0  | Portage     |
| Lowell | 0  | 26 | Crown Point |
| Lowell | 7  | 0  | Merriville  |
| Lowell | 31 | 0  | Dyer        |



**JUNIOR VARSITY** Row 1: Elmo Howard, Dennis Cokenour, Bob Ragon, Glen Groves, Ted Stokes, Jim Pierce, Dennis Williamson, Dan Breckling, Jerry Hayden, Warren Brown-manager, Row 2: Coach Baker, Ronnie Manno, Bruce Milakovic, Jack Wilson, George Savage, Lee Usher, Bob Gidley, Dick Nomanson, John Nease, Jim Baker, Coach Moretz, Row 3: Ken Craft, Paul Richardson, Larry Hine, Roger Sund, Ralph Rietman, Jim VanWienen, Gilburn Wedding, Larry Johnson, Paul Land, David Julian.



# VARSITY Basketball

|           |    |              |
|-----------|----|--------------|
| Lowell 59 | 51 | Wheeler      |
| Lowell 46 | 64 | Chesterston  |
| Lowell 34 | 52 | Hebron       |
| Lowell 72 | 76 | De Motte     |
| Lowell 74 | 57 | Morocco      |
| Lowell 63 | 57 | Dyer         |
| Lowell 32 | 63 | North Judson |
| Lowell 72 | 71 | Hobart       |
| Lowell 82 | 78 | East Gary    |
| Lowell 50 | 69 | Wheatfield   |
| Lowell 71 | 70 | Crown Point  |
| Lowell 75 | 82 | Portage      |
| Lowell 52 | 79 | Gary Edison  |
| Lowell 58 | 81 | Merriville   |
| Lowell 54 | 65 | Gary Wirt    |
| Lowell 47 | 74 | Griffith     |

## Lowell Holiday Tourney

|           |    |       |
|-----------|----|-------|
| Lowell 66 | 49 | Hanna |
| Lowell 65 | 36 | Dyer  |

## Rensselaer Tourney

|           |    |              |
|-----------|----|--------------|
| Lowell 50 | 56 | Goodland     |
| Lowell 32 | 52 | Francesville |

## Sectional Tourney

|           |    |             |
|-----------|----|-------------|
| Lowell 38 | 64 | Bishop Noll |
|-----------|----|-------------|



Jerry Alyea  
Senior

Dick Phelps - Senior



Kneeling: Jerry Alyea, Roger Armstrong, Bill Marlowe, Jack Eaker. Standing: John Percy, Larry Hine, Dick Phelps, Loren Gidley, Jim Lane, Bill Underwood, Coach Schuyler.





**JUNIOR VARSITY** Row 1: Jerry Pierce, Jim Baker, Lee Usher, Tom Gollings, Jim Johnson, Gary White, John Shipley.  
 Row 2: Coach Molchan, Ronnie Ellis, Gil Wedding, John Tuttle, Ed Checknis, Bob Austgen, Don Sinclair, Jim Anderson.



**FRESHMEN BASKETBALL TEAM** Row 1: Denny Williamson, Jack Jackson, Ted Stokes, Jeff Wilk, Larry Perfetti, Lanny Parrish, Jim Pierce, Ronnie Manno. Row 2: Bruce Milakovic, Jack Wilson, Dave Stuhlman, Keith McCloud, Bob Smith, Roger Sund, Bob Gidley, Harold Wicker, Joe Haberztle, Gene Fuller, and Coach Klein.





PARANG  
PO LE  
UROR



LINDA ROBERTS - VARSITY



CAROLE DIDDIE - VARSITY



JUDY RIEKE, PAULA STANDISH - J. V.



Freshmen Cheerleaders  
Carole Peterson, Brenda Roberts, Larry Love, Joan  
Templin, Mary Kay Rieke, Karen Zander.



WAYNE CHILDRESS - VARSITY



SHERRY HARKABUS - VARSITY

# WRESTLING



Row 1: Chris Kuiper, Coug Lawson, Jim Hunley, Dennis Cokenour, Pat O'Connell, Bub Ballour, Bud Brown. Row 2: Cecil Jillian, Bob Benda, Ed Snell, Doug Sheehy, Jim Herbst, Joe Alyea, Jim McGee. Row 3: Coach Moretz, Larry Johnson, Grant Rensze, Tom Moore, Randy Ruge, Gene Black, John Edmondson.

# BASEBALL



Kneeling: Roger Armstrong, Ronnie Dunbar, Larry Hine, Jim Kliene, Bob Benda. Standing: Coach Molchan.



Row 1: Jim Sauter, George Malo. Row 2: Ron Ebert, John Edmondson, Mike Boyd. Row 3: Don Adam, Bob Joyce, Ed Hamilton.

FOOTBALL SPORTSMANSHIP AWARD  
Bud Ballou



CROSS COUNTRY SPORTSMANSHIP AWARD  
Paul Kirchenstien





# TRACK



Kneeling: Manager Mike Boyd, Ray Dodge, Gary White, Don Domell, Jim Baker, Cecil Julian, Ronnie Herz  
Standing: Coach Schuyler, Jim Herbst, Don Jurs, John Percy, Paul Kirchenstein, Paul Steward, Jim Tully, Jim Lane, Bill Marshall, Dave Sutton.

# CROSS COUNTRY



Front row: Coach Schuyler, Tom Gollints, Larry Perfetti, Jack Eaker, Roger Armstrong, Don Domelle, Gary White, David Meyer, Harold Wicker.



Football Co-Captains  
Budd Ballou and Jim Tully



Basketball Co-Captains  
Jerry Alyea and Dick Phelps



Wrestling Captain  
Budd Ballou



Track Co-Captains  
Jim Tully and Paul Steward



Cross Country Captain  
Paul Kirchenstein



# autographs

# autographs

**PAGE  
MISSING**

**PAGE  
MISSING**

the 1990s, the number of people who have been employed in the public sector has increased in most countries.

There are a number of reasons for this. One is that the public sector has become a more important part of the economy. In many countries, the public sector now accounts for a significant proportion of the total economy. This is particularly true in countries with a high level of social welfare provision. Another reason is that the public sector has become a more attractive place to work. This is due to a number of factors, including the fact that the public sector is often seen as a more stable and secure place to work than the private sector.

There are also a number of other reasons for the increase in public sector employment. One is that the public sector has become a more important part of the economy. In many countries, the public sector now accounts for a significant proportion of the total economy. This is particularly true in countries with a high level of social welfare provision. Another reason is that the public sector has become a more attractive place to work. This is due to a number of factors, including the fact that the public sector is often seen as a more stable and secure place to work than the private sector.

There are also a number of other reasons for the increase in public sector employment. One is that the public sector has become a more important part of the economy. In many countries, the public sector now accounts for a significant proportion of the total economy. This is particularly true in countries with a high level of social welfare provision. Another reason is that the public sector has become a more attractive place to work. This is due to a number of factors, including the fact that the public sector is often seen as a more stable and secure place to work than the private sector.

There are also a number of other reasons for the increase in public sector employment. One is that the public sector has become a more important part of the economy. In many countries, the public sector now accounts for a significant proportion of the total economy. This is particularly true in countries with a high level of social welfare provision. Another reason is that the public sector has become a more attractive place to work. This is due to a number of factors, including the fact that the public sector is often seen as a more stable and secure place to work than the private sector.

There are also a number of other reasons for the increase in public sector employment. One is that the public sector has become a more important part of the economy. In many countries, the public sector now accounts for a significant proportion of the total economy. This is particularly true in countries with a high level of social welfare provision. Another reason is that the public sector has become a more attractive place to work. This is due to a number of factors, including the fact that the public sector is often seen as a more stable and secure place to work than the private sector.

There are also a number of other reasons for the increase in public sector employment. One is that the public sector has become a more important part of the economy. In many countries, the public sector now accounts for a significant proportion of the total economy. This is particularly true in countries with a high level of social welfare provision. Another reason is that the public sector has become a more attractive place to work. This is due to a number of factors, including the fact that the public sector is often seen as a more stable and secure place to work than the private sector.





